

C  
1

A  
2

U  
3

S  
4

E  
5

d  
6

## What Does It Mean

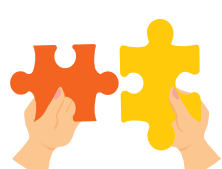
1



### Communication

Challenges the person is experiencing, and the communication approach others use.

2



### Activity

Nature of the activities the person is engaged in.

3



### Unwell / Unmet Needs

Physical and emotional health of the person.

4

### Story

Life story of the person.

5

### Environment

Social and physical environments the person lives in and how they respond to the stimuli in the environments (over- or under-stimulation).

6

### dementia

Type of dementia and the changes related to it.



## Guiding Questions to Ask

- Does the person need glasses or hearing aids?
- Does the person understand what is being said to them?
- Is the person being understood?
- Does the person understand what is expected of them?
- Have they misinterpreted someone's tone of voice?
- Do they find someone's body language threatening?

- Is the activity of interest to the person?
- Is it too complex?
- Is it sufficiently challenging?
- Is the activity intrusive?

### Physical

Is there an underlying physical cause? E.g., infection, constipation, dehydration.

Does medication contribute to the behaviour?

Is the person feeling :

- Pain?
- Comfortable?
- Tired or fatigued?
- Hungry or thirsty?

### Emotional

Are emotional needs being met? E.g., is the person showing stress, apathy, loneliness, depression, or lack of purpose?

Bored or lacking exercise?

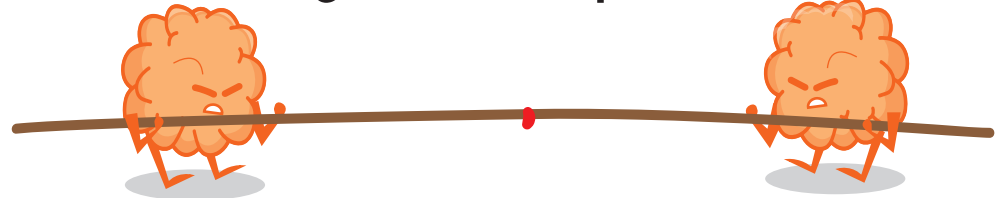
Can the person make their own choices?

Are the person's habits and routines respected?

## Aspects of the life story that might have a significant impact



## Stimuli in the ENVIRONMENTS that might have a significant impact include:



### Physical Environment

- Noise
- Lighting
- Colour scheme
- Labels
- Activity of other people

### Social Environment

- Interaction with friends and family: is this person being provoked by anyone?
- Family dynamics
- Inclusion
- Familiar belongings
- Languages spoken

What strengths and abilities does the person still have?

What type of dementia does this person have?

What changes occur with this type of dementia?